

country properties  
village properties  
town homes  
barn conversions  
building plots

**NICK & GORDON**  
**CARVER**  
RESIDENTIAL



**Zetland Hunt, The Chase, Newton Aycliffe, DL5 7LQ**  
**Offers in the region of £115,000**

Offered for sale with NO ONWARD CHAIN this end-link property features an ALLOCATED CAR PARKING SPACE and a SINGLE GARAGE. Pleasantly situated on the popular "Chase" development within walking distance of reputable schooling, the property is equipped with gas central heating to radiators, uPVC double glazing and a security alarm system.





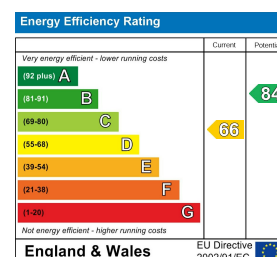
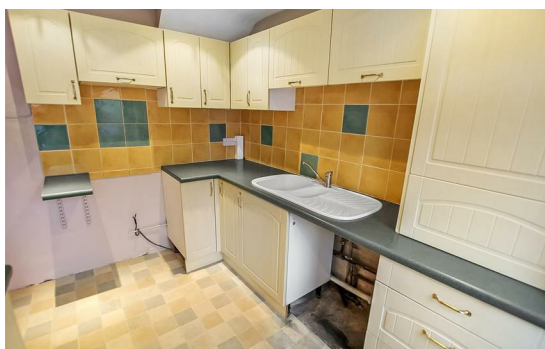
## Agents Notes

Mains gas, (central heating to radiators), electricity & drainage

uPVC double glazing throughout

Council Tax - Band A  
Durham County Council

The property is offered for sale with NO ONWARD CHAIN



**We can search 1,000s of mortgages for you**

It could take just 15 minutes with one of our specialist advisers:

Call: 01325 380088. Visit: Any of our Offices. Online: [www.mortgageadvicebureau.com/carver](http://www.mortgageadvicebureau.com/carver)



Your home may be repossessed if you do not keep up repayments on your mortgage.

There will be a fee for mortgage advice. The actual amount you pay will depend upon your circumstances.

The fee is up to 1% but a typical fee is 0.3% of the amount borrowed

MAB 6202



These particulars do not constitute any part of an offer or contract. None of the statements contained in these particulars are to be relied on as statements or representations of fact and any intending purchaser must satisfy himself by inspection or otherwise to the correctness of each of the statements contained in these particulars. The vendor does not make or give, and neither Nick & Gordon Carver Residential or Commercial, Nick & Gordon Carver, nor any person in their employment has any authority to make or give any representation or warranty whatever in relation to this property

80 High Street  
Yarm, TS15 9AH  
Tel: 01642 420090  
[yarm@carvergroup.co.uk](mailto:yarm@carvergroup.co.uk)

14 Duke Street, Darlington  
County Durham, DL3 7AA  
Tel: 01325 357807  
[sales@carvergroup.co.uk](mailto:sales@carvergroup.co.uk)

26 Market Place, Richmond  
North Yorkshire, DL10 4QG  
Tel: 01748 825317  
[richmond@carvergroup.co.uk](mailto:richmond@carvergroup.co.uk)

43 Dalton Way, Newton Aycliffe  
County Durham, DL5 4DJ  
Tel: 01325 320676  
[aycliffe@carvergroup.co.uk](mailto:aycliffe@carvergroup.co.uk)

219 High Street, Northallerton  
North Yorkshire, DL7 8LW  
Tel: 01609 777710  
[northallerton@carvergroup.co.uk](mailto:northallerton@carvergroup.co.uk)

[www.carvergroup.co.uk](http://www.carvergroup.co.uk)